

Technical information for Truck Refrigeration Unit SC90D



Cooling capacity (Engine drive)	1.7℃ (35°F)	9200W (31392Btu/hr)
	-17.8℃ (0°F)	5600W (19108Btu/hr)
Cooling capacity (Electric motor drive)	1.7℃ (35°F)	7350W (25079Btu/hr)
	-17.8℃ (0°F)	4950W (16890Btu/hr)
Heating capacity	-29.0℃ (-20°F)	5600W (19108Btu/hr)
Applicable temperature	-25~20℃ (-13~68°F)	
Applicable volume(m³)	46~70	
Compressor	Model	BITZER 4TFRY
	Lubricating oil	SE55
Condenser	Type	Inner spiral copper pipe/aluminum fin
	Fan model	Axial fan
Evaporator	Type	Inner spiral copper pipe/aluminum fin
	Fan model	Axial fan
	Voltage	12V DC
Unit drive engine	1131cc	
Standby electric motor	Power (KW)	9
	Power supply(V/HZ)	380V/3P/50HZ
Refrigerant	R404A	
Refrigerant charge(kg)	5.2	
Weight(kg)	530	
Dimensions (mm)	L*W*H=1960*(925+719)*692	

Note: 1.The cooling capacity is tested according to the conditions specified in GB / T 21145-2007;
2.The insulation performance of refrigerated containers complies with the relevant provisions of GB 29753-2013.



Evaporator fan



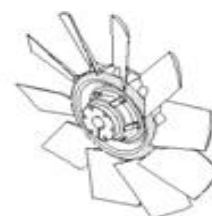
Compressor



Engine



Generator



Condenser fan



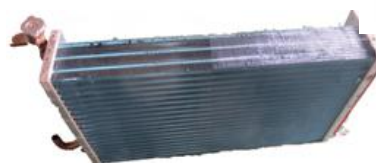
Motor



Controller



Evaporator coil



Condenser coil

1. Control panel

Digital display, intelligent temperature control and fault indication.

2. Evaporator fan

SPAL brand, world famous brand, high air volume, low noise, high efficiency, expected life time is 10000hours.

3. Condenser fan

America brand, high efficiency, high air volume.

4. Expansion valve

DANFOSS brand, high reliability, high adjustment accuracy and excellent performance.

5. Compressor

BITZER brand, high efficiency, large displacement, steady quality.

6. Engine

PERKINS brand, diesel engine, international brand, stable performance, reliable quality.

7. Motor

Minrong brand, high efficiency, steady quality

8. Generator

Prestolite(Beijing) brand, international brand, stable performance, reliable quality.

9. Condenser coil

SONGZ brand, adopt small diameter ($\varnothing 7\text{mm}$) and inner grooved copper tube, comparing to ($\varnothing 9.52\text{mm}$ copper tube, the coefficient of heat transfer is improved by 5%, condensing temperature declines, system efficiency rises about 9%, refrigerant filling declines near 7%.

10. Evaporator coil

SONGZ brand, select small diameter ($\varnothing 9.52\text{mm}$) and inner grooved copper tube. The evaporator adopt super-thin coil to save more space for the cabinet, has high efficiency.

11. Pipe and hose

Select high strength rubber hose and copper pipe, easy installation, good sealing performance.

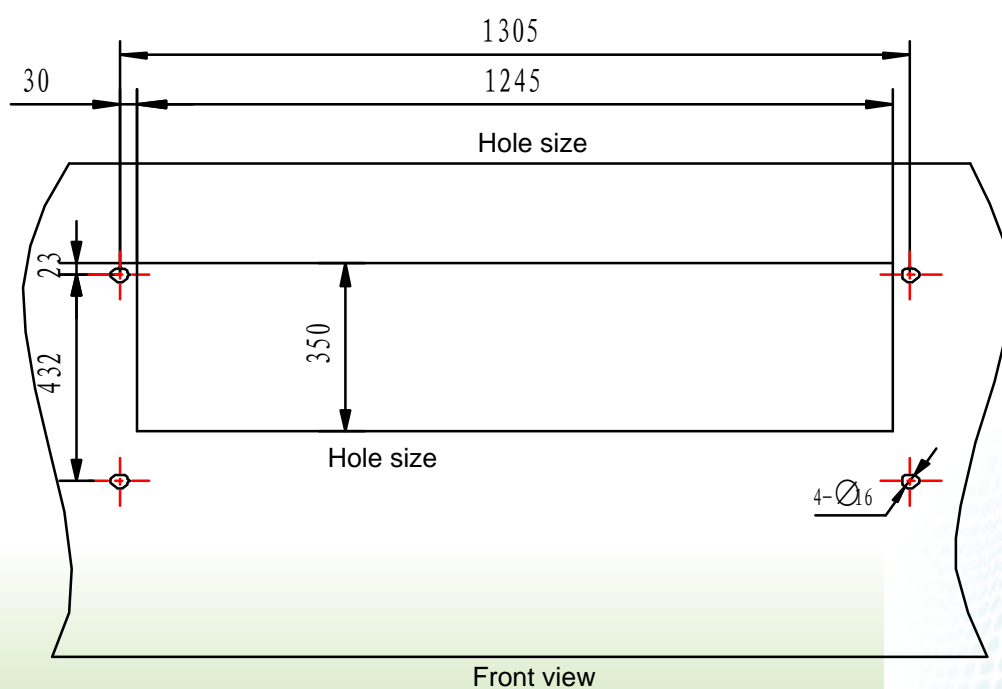
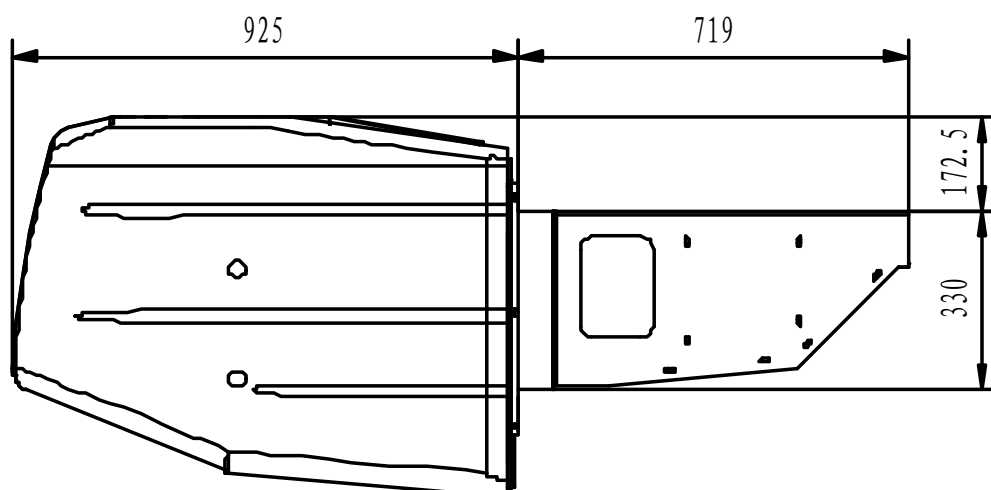
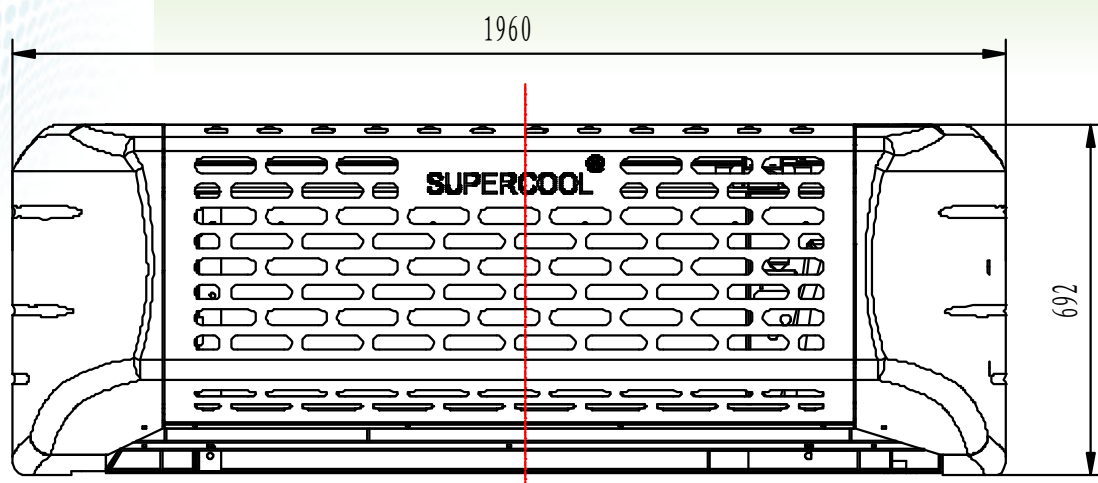
12. Frame

The frame material is steel, the evaporator shell select the aluminum alloy, the condenser shell selects glass fiber reinforced plastics, has light weight. Have elegant appearance, streamline design, small wind resistance.

13. Shell

Select high strength fiber glass, has compact structure, elegant appearance, streamline design, anti-aging.

Outline and Installation Dimensions



Note: All datum and specifications may change without notice.