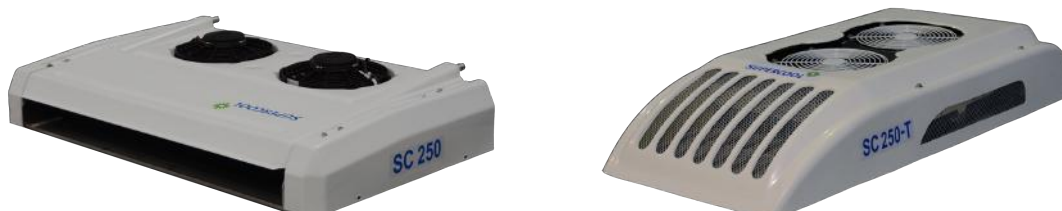


Technical information for Truck Refrigeration Unit SC250-T



| | | |
|----------------------------|----------------|--|
| Cooling capacity(W) | 1.7℃ | 2.35KW |
| | -17.8℃ | 1.35KW |
| Applicable temperature | -25~20℃ | |
| Applicable volume | 8~12m³ | |
| Compressor | Model | QP15/SD5L14(Optional) |
| | Type | Swash plate |
| | Displacement | 146cc/138cc |
| | Lubricant type | POE R68H |
| Condenser | Type | Parallel flow |
| | Fan model | Axial fan |
| | Voltage | 12V/24V |
| Evaporator | Type | Internal thread copper pipe aluminum fin |
| | Fan model | Axial fan |
| | Voltage | 12V/24V |
| Throttling type | | External equalizer expansion valve |
| Refrigerant | | R404A |
| Refrigerant filling volume | | 1.2kg |
| Defrost type | | Hot gas defrost |
| Installation | | Front mounted type |
| Dimensions | Evaporator | L×W×H=1007×595×180mm |
| | Condenser | L×W×H=1120×635×185mm |
| Weight | Evaporator | 21kg |
| | Condenser | 27kg |

Note: 1.The cooling capacity is tested according to the conditions specified in GB / T 21145-2007;
 2.The insulation performance of refrigerated containers complies with the relevant provisions of GB 29753-2013.



Fan



Compressor



Control Panel



Condenser Core



Evaporator Coil



Standby Unit (Optional)

1.Control panel

Digital display, intelligent temperature control and fault indication.

2.Compressor

T/CCI, high efficiency, large displacement, steady quality.

3.Evaporator and condenser fan

Evaperator fan SPAL brand , world famous brand. Condenser fan Chinese famous brand. High air volume, low noise, high efficiency.

4.Expansion valve

DANFOSS brand, high reliability, high adjustment accuracy and excellent performance.

5.Condenser core

SONGZ brand, The circuit is arranged in parallel with multiple channels, the pressure loss is small, and the compressor load is reduced.Compact structure, and high heat exchange efficiency.Surface anti-corrosion treatment, long service life.

6.Evaporator coil

SONGZ brand, select small diameter($\varnothing 9.52\text{mm}$) and inner grooved copper tube.The evaporator adopt super-thin coil to save more space for the cabinet, has high efficiency.

7.Pipe and hose

Select high strength rubber hose and copper pipe, easy installation, good sealing performance.

8. Standby Unit (optional)

Adopt SANDEN(optional) compressor and Chinese famous brand motor.

Outline and Installation Dimensions

