

# Technical information for Truck Refrigeration Unit SC380



Cooling Capacity (Environmental Temperature 37.8°C)	1.7 °C	3.9 kW
	-17.8 °C	2.3kW
Applicable Temperature	-25~20 °C	
Applicable Volume	14~20 m <sup>3</sup>	
Compressor	Model	QP16/SD7L15(Optional)
	Type	Swash Plate
	Displacement	163cc/154cc
	Lubricant Type	POE RL68H
Condenser	Type	Parallel Fow
	Fan Model	Axial Fan
	Voltage	12V/24V
Evaporator	Type	Copper Pipe and Aluminum Fin
	Fan Model	Axial Fan
	Voltage	12V/24V
Throttling Type		External Equalizer Expansion Valve
Refrigerant		R404a
Refrigerant Filling Volume		1.5 kg
Defrost Type		Hot Gas Defrost
Installation Type		Front Mounted Type
Dimensions	Evaporator	L*W*H=1207*595*180mm
	Condenser	L*W*H=1150*515*352mm
Weight	Evaporator	26.5 kg
	Condenser	32 kg

Note: 1.The cooling capacity is tested according to the conditions specified in GB / T 21145-2007;  
 2.The insulation performance of refrigerated containers complies with the relevant provisions of GB 29753-2013.



Evaporator Fan



Compressor



Control Panel



Condenser Fan



Condenser Core



Evaporator Coil



Standby Unit

### 1. Evaporator and condenser fan

Evaporator fan SPAL brand, world famous brand. Condenser fan Chinese famous brand. High air volume, low noise, high efficiency.

### 2. Evaporator Coil

SONGZ brand, adopt small diameter ( $\varnothing 7\text{mm}$ ) and inner grooved copper tube, comparing to  $\varnothing 9\text{mm}$  copper tube, the coefficient of heat transfer is improved by 5%, condensing temperature declines  $2\sim 3^{\circ}\text{C}$ , system efficiency rises 5~8%, refrigerant filling declines 10%.

### 3. Condenser Core

Adopts advanced micro-channel and variable flow technology. It's compact structure has a higher heat transfer coefficient, light weight, lower cost and less refrigerant charge.

### 4. Expansion Valve

DANFOSS brand, high reliability, high adjustment accuracy and excellent performance.

### 5. Compressor

T/CCI brand, high efficiency, large displacement, steady quality.

### 6. Control Panel

Digital display, intelligent temperature control and fault indication.

### 7. Pipe and Hose

Adopt high strength rubber hose and copper pipe, easy installation, good sealing performance.

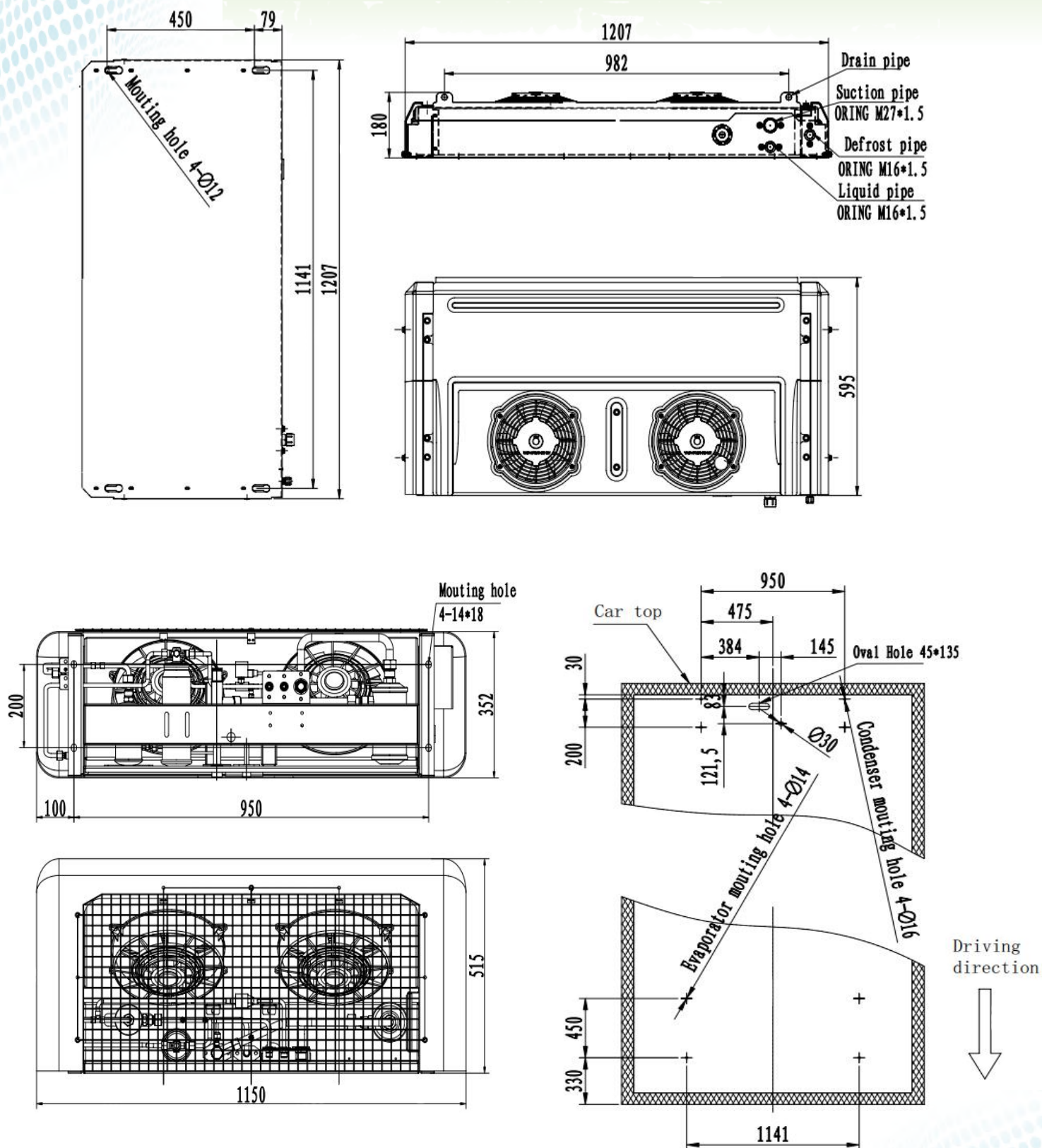
### 8. Framework and Shell

The framework adopts aluminum alloy, the shell adopts ABS plastic. The condenser and evaporator has compact structure, elegant appearance, streamline design, small wind resistance.

### 9. Standby Unit (optional)

Adopt SANDEN(optional) compressor and Chinese famous brand motor.

## Outline and Installation Dimensions



Note: All datum and specifications may change without notice.